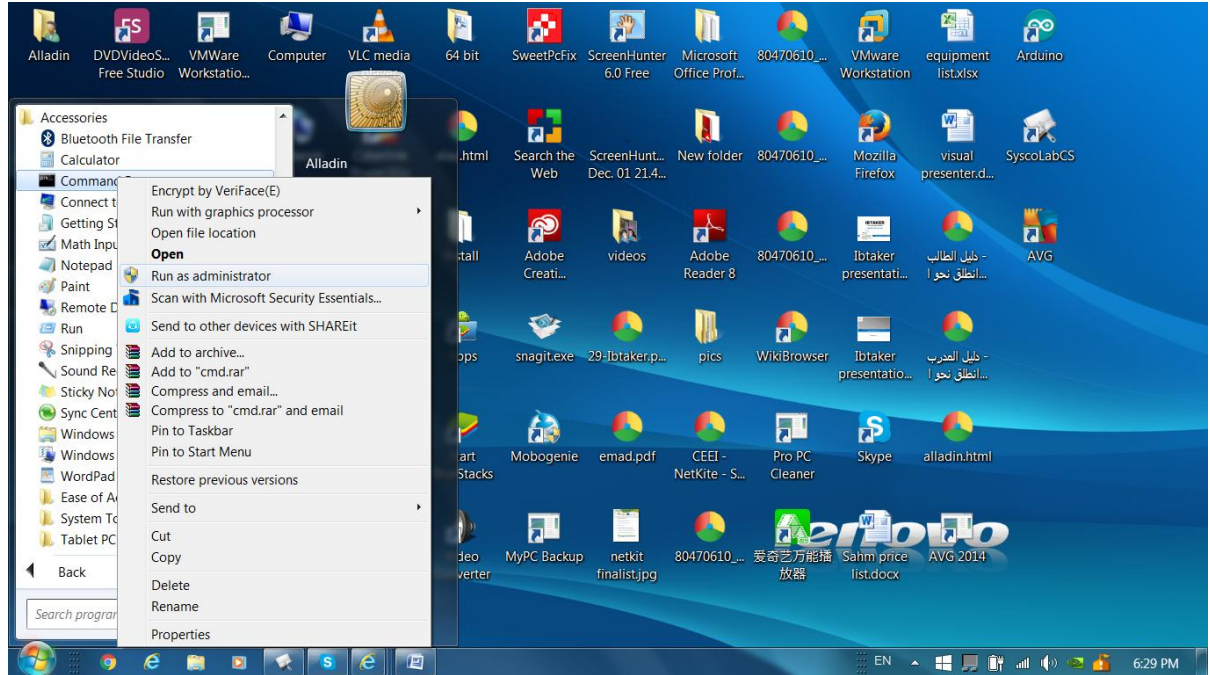


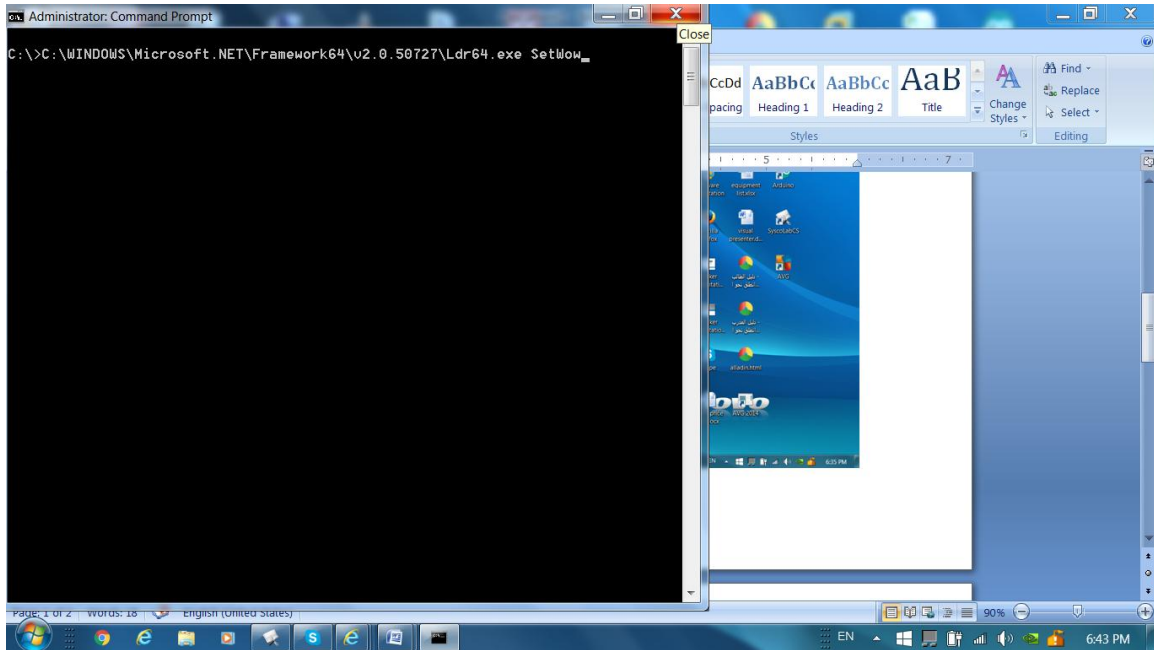


1. Open up administrator's command prompt

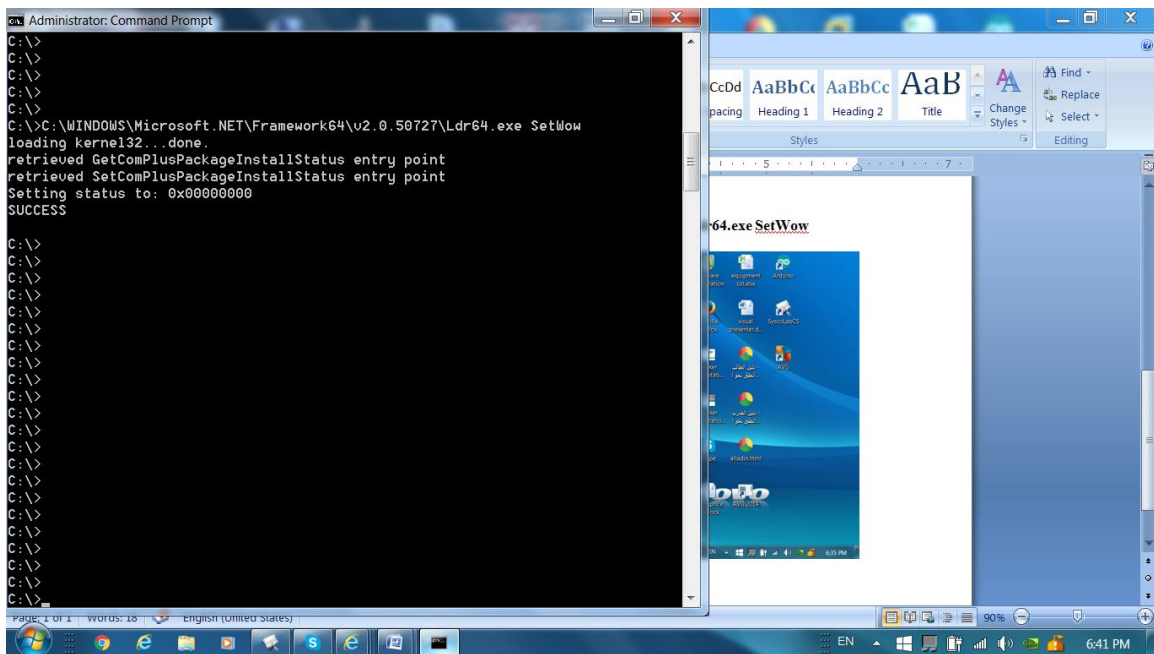


2. Type this command in the command line

C:\WINDOWS\Microsoft.NET\Framework64\v2.0.50727\Ldr64.exe SetWow



3. Make sure that you get the following message ... SUCCESS



4. Run SyscoLabCS\_Setup.exe and press <<Next>> on all installation steps....



5. To make sure that the software is installed correctly run
6. To install the Driver:
  - a. Do Not plug the USB cable ( or Unplug it) until you are asked to do so.
  - b. Run ...\Install 64bit\**mcu-driverPL2303\_64bit\_Installer.exe**
  - c. Follow the driver installation steps and when you are asked to plug the USB cable to the kit, then plug it to USB 2.0 port (white port) in your computer.



- d. Continue the installation steps to the end.

Important Note: if you have older version of the driver, you must install it before you install the new version.